

Reporting tool

Aim of the tool:

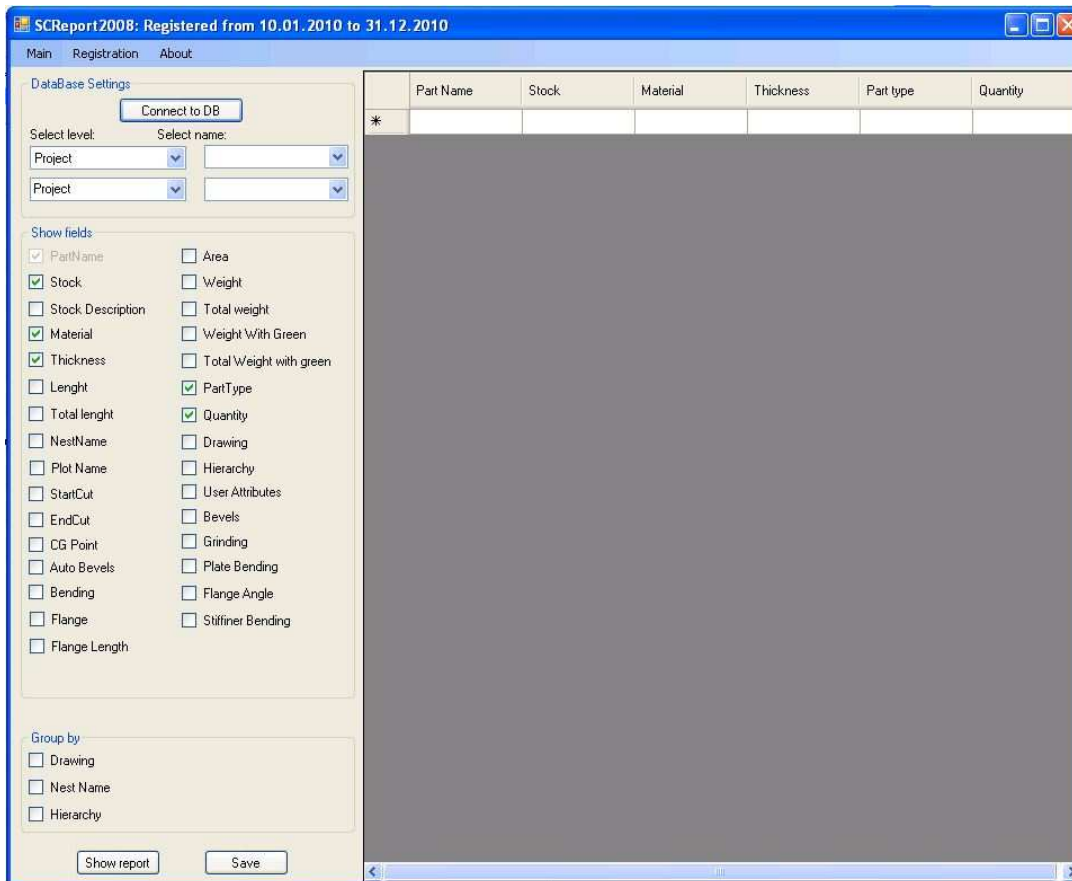
ShipConstructor Report module provides powerful tools for creating diverse reports (including grouping, sorting and summarizing) , though , when simple plain report is required , suggested reporting tool can be more flexible and convenient.

Workflow:

Reporting tool is made as one executable file. User starts the tool, connects to the database, sets-up necessary columns and creates report.

Interface:

Report dialog window:



Description of options:

User connects to the database and selects Unit for reporting. It is also possible to select sub-assembly inside of Unit:



List of properties, available for reporting:

Show fields

<input checked="" type="checkbox"/> PartName	<input type="checkbox"/> Area
<input checked="" type="checkbox"/> Stock	<input type="checkbox"/> Weight
<input type="checkbox"/> Stock Description	<input type="checkbox"/> Total weight
<input checked="" type="checkbox"/> Material	<input type="checkbox"/> Weight With Green
<input checked="" type="checkbox"/> Thickness	<input type="checkbox"/> Total Weight with green
<input type="checkbox"/> Length	<input type="checkbox"/> PartType
<input type="checkbox"/> Total length	<input checked="" type="checkbox"/> Quantity
<input checked="" type="checkbox"/> NestName	<input checked="" type="checkbox"/> Drawing
<input type="checkbox"/> Plot Name	<input type="checkbox"/> Hierarchy
<input type="checkbox"/> StartCut	<input type="checkbox"/> User Attributes
<input type="checkbox"/> EndCut	<input type="checkbox"/> Bevels
<input type="checkbox"/> CG Point	<input type="checkbox"/> Grinding
<input type="checkbox"/> Auto Bevels	<input type="checkbox"/> Plate Bending
<input type="checkbox"/> Bending	<input type="checkbox"/> Flange Angle
<input type="checkbox"/> Flange	<input type="checkbox"/> Stiffener Bending
<input type="checkbox"/> Flange Length	

Most of properties are taken directly from database and only few of them (as Quantity, e.g.) are calculated.

When connection to the database is established, Unit (optionally Sub-assembly) is chosen and necessary properties are selected, "Show report" command will produce a requested report:

SCReport2008: Registered from 10.01.2010 to 31.12.2010

Main Registration About

DataBase Settings

Connect to DB

Select level: UNIT Select name: U01

Show fields

Group by

Show report Save

Part Name	Stock	Material	Thickness	NestName	Quantity	Drawing
5800-U01-BD-02	PL06	Grade A	6	5800-PL06-030	1	U01_BRIDGEDECK
5800-U01-BD-03	PL06	Grade A	6	5800-PL06-037	1	U01_BRIDGEDECK
5800-U01-BD-04	PL06	Grade A	6	5800-PL06-042	1	U01_BRIDGEDECK
5800-U01-BD-05	HP 140...	Grade A			2	U01_BRIDGEDECK
5800-U01-BD-06	HP 120...	Grade A			1	U01_BRIDGEDECK
5800-U01-BD-07	HP 140...	Grade A			2	U01_BRIDGEDECK
5800-U01-BD-08	HP 120...	Grade A			1	U01_BRIDGEDECK
5800-U01-BD-09	HP 120...	Grade A			1	U01_BRIDGEDECK
5800-U01-BD-10	HP 120...	Grade A			1	U01_BRIDGEDECK
5800-U01-BD-11	HP 120...	Grade A			1	U01_BRIDGEDECK
5800-U01-BD-12	HP 140...	Grade A			1	U01_BRIDGEDECK
5800-U01-BD-13	HP 140...	Grade A			5	U01_BRIDGEDECK
5800-U01-BD-14	HP 120...	Grade A			1	U01_BRIDGEDECK
5800-U01-BD-15	HP 120...	Grade A			5	U01_BRIDGEDECK
5800-U01-BD-16	HP 140...	Grade A			4	U01_BRIDGEDECK
5800-U01-BD-17	HP 140...	Grade A			1	U01_BRIDGEDECK
5800-U01-BD-18	HP 140...	Grade A			1	U01_BRIDGEDECK
5800-U01-BD-19	PL08	Grade A	8	5800-PL08-015	1	U01_BRIDGEDECK
5800-U01-BD-20	FB 80x 8	Grade A			1	U01_BRIDGEDECK
5800-U01-BD-21	PL08	Grade A	8	5800-PL08-025	1	U01_BRIDGEDECK
5800-U01-BD-22	FB 80x 8	Grade A			1	U01_BRIDGEDECK
5800-U01-BD-23	PL08	Grade A	8	5800-PL08-010	1	U01_BRIDGEDECK
5800-U01-BD-24	PL08	Grade A	8	5800-PL08-001	1	U01_BRIDGEDECK
5800-U01-BD-25	PL08	Grade A	8	5800-PL08-021	1	U01_BRIDGEDECK
5800-U01-BD-26	FB 80x 8	Grade A			1	U01_BRIDGEDECK
5800-U01-BD-27	PL08	Grade A	8	5800-PL08-018	1	U01_BRIDGEDECK
5800-U01-BD-28	FB 80x 8	Grade A			1	U01_BRIDGEDECK
5800-U01-BD-29	PL07	Grade A	7	5800-PL07-041	1	U01_BD
5800-U01-BD-30	PL07	Grade A	7	5800-PL07-040	1	U01_BD
5800-U01-BD-31	PL07	Grade A	7	5800-PL07-045	1	U01_BD
5800-U01-BD-32	PL07	Grade A	7	5800-PL07-045	1	U01_BD
5800-U01-BD-33	PL07	Grade A	7	5800-PL07-038	1	U01_BD
5800-U01-BD-34	PL07	Grade A	7	5800-PL07-028	1	U01_BD

Click on the header of each column will sort the entire report by this field (ascending or descending).

The following picture shows the case, when there are multiple parts with the same name in the model and they are nested in different nests (highlighted line with part 5800-U01-CD-31 - 41 parts nested in various nests).

Part Name	Stock	Material	Thickness	NestName	Quantity	Drawing
5800-U01-F78-118	PL12	Grade A	12	5800-PL12-001	1	U01_FR78
5800-U01-F63-34	PL12	Grade A	12	5800-PL12-001	1	U01_FR63
5800-U01-F63-35	PL12	Grade A	12	5800-PL12-001	1	U01_FR63
5800-U01-F78-105	PL12	Grade A	12	5800-PL12-001	1	U01_FR78
5800-U01-CL-03	PL12	Grade A	12	5800-PL12-004	1	U01_CL
5800-U01-F78-02	PL12	Grade A	12	5800-PL12-005	1	U01_FR78
5800-U01-F78-09	PL12	Grade A	12	5800-PL12-006	1	U01_FR78
5800-U01-CL-07	PL12	Grade A	12	5800-PL12-006	1	U01_CL
5800-U01-F63-32	PL12	Grade A	12	5800-PL12-007	1	U01_FR63
5800-U01-F78-07	PL12	Grade A	12	5800-PL12-007	1	U01_FR78
5800-U01-CL-01	PL12	Grade A	12	5800-PL12-007	1	U01_CL
5800-U01-F63-33	PL12	Grade A	12	5800-PL12-007	1	U01_FR63
5800-U01-L1500-33	FB 200...	Grade A		5800-PL15-004	1	U01_LG 1500 SB
5800-U01-BD-37	PL20	Grade A	20	5800-PL20-001	1	U01_BD
5800-U01-CL-04	FB 250...	Grade A		5800-PL20-001	1	U01_CL
5800-U01-CL-02	FB 250...	Grade A		5800-PL20-001	1	U01_CL
5800-U01-BD-61	PL20	Grade A	20	5800-PL20-001	1	U01_BD
5800-U01-BD-70	PL50	Grade D	50	5800-PL50-001	1	U01_BRIDGEDECK
5800-U01-TT5000-09	PL07	Grade A	7	Various	2	U01_FR78
5800-U01-TT5000-05	PL07	Grade A	7	Various	4	U01_FR78
5800-U01-F78-96	PL07	Grade A	7	Various	2	U01_FR78
5800-U01-F78-106	PL08	Grade A	8	Various	5	U01_FR78
5800-U01-F78-99	PL08	Grade A	8	Various	5	U01_FR78
5800-U01-TT5000-06	PL07	Grade A	7	Various	2	U01_FR78
5800-U01-F78-101	PL08	Grade A	8	Various	5	U01_FR78
5800-U01-F66-69	PL08	Grade A	8	Various	4	U01_FR66
5800-U01-F64-13	PL08	Grade A	8	Various	2	U01_FR64
5800-U01-CD-31	PL06	Grade A	6	Various	41	U01_CABIN DECK
5800-U01-CD-35	PL06	Grade A	6	Various	40	U01_CABIN DECK
5800-U01-F73-51	PL08	Grade A	8	Various	8	U01_FR73
5800-U01-BD-52	PL08	Grade A	8	Various	2	U01_BRIDGEDECK

Grouping tools allow to report how many parts are nested in each nest. If in grouping section of the window user checks in option “Group by Nest Name” :

Group by:

Drawing

Nest Name

Hierarchy

report will immediately transform into the following format :

Part Name	Stock	Material	Thickness	NestName	Quantity	Drawing
5800-U01-CD-10	L 50x 5...	Grade A			1	U01_CABIN DECK
5800-U01-CD-11	L 50x 5...	Grade A			1	U01_CABIN DECK
5800-U01-CD-12	L 50x 5...	Grade A			1	U01_CABIN DECK
5800-U01-CD-13	L 50x 5...	Grade A			1	U01_CABIN DECK
5800-U01-CD-14	L 50x 5...	Grade A			1	U01_CABIN DECK
5800-U01-CD-15	L 50x 5...	Grade A			1	U01_CABIN DECK
5800-U01-CD-16	L 50x 5...	Grade A			1	U01_CABIN DECK
5800-U01-CD-17	L 50x 5...	Grade A			1	U01_CABIN DECK
5800-U01-CD-18	L 50x 5...	Grade A			1	U01_CABIN DECK
5800-U01-CD-19	L 50x 5...	Grade A			1	U01_CABIN DECK
5800-U01-CD-20	L 50x 5...	Grade A			1	U01_CABIN DECK
5800-U01-CD-21	L 50x 5...	Grade A			1	U01_CABIN DECK
5800-U01-CD-22	L 50x 5...	Grade A			48	U01_CABIN DECK
5800-U01-CD-23	L 50x 5...	Grade A			1	U01_CABIN DECK
5800-U01-CD-24	L 50x 5...	Grade A			1	U01_CABIN DECK
5800-U01-CD-25	L 50x 5...	Grade A			3	U01_CABIN DECK
5800-U01-CD-26	L 50x 5...	Grade A			1	U01_CABIN DECK
5800-U01-CD-27	L 50x 5...	Grade A			52	U01_CABIN DECK
5800-U01-CD-28	L 50x 5...	Grade A			3	U01_CABIN DECK
5800-U01-CD-29	L 50x 5...	Grade A			1	U01_CABIN DECK
5800-U01-CD-30	L 50x 5...	Grade A			42	U01_CABIN DECK
5800-U01-CD-31	PL06	Grade A	6	5800-PL06-003	21	U01_CABIN DECK
5800-U01-CD-31	PL06	Grade A	6	5800-PL06-001	12	U01_CABIN DECK
5800-U01-CD-31	PL06	Grade A	6	5800-PL06-008	2	U01_CABIN DECK
5800-U01-CD-31	PL06	Grade A	6	5800-PL06-002	6	U01_CABIN DECK
5800-U01-CD-32	L 50x 5...	Grade A			5	U01_CABIN DECK
5800-U01-CD-33	PL06	Grade A	6	5800-PL06-006	5	U01_CABIN DECK
5800-U01-CD-34	L 50x 5...	Grade A			41	U01_CABIN DECK
5800-U01-CD-35	PL06	Grade A	6	5800-PL06-008	2	U01_CABIN DECK
5800-U01-CD-35	PL06	Grade A	6	5800-PL06-005	11	U01_CABIN DECK
5800-U01-CD-35	PL06	Grade A	6	5800-PL06-004	26	U01_CABIN DECK
5800-U01-CD-35	PL06	Grade A	6	5800-PL06-003	1	U01_CABIN DECK
5800-U01-CD-36	L 50x 5...	Grade A			1	U01_CABIN DECK

Now, there are 4 instances of part 5800-U01-CD-31, which means, that all of them are nested in 4 nests. Grouping by Drawing and by Hierarchy works in the same way.

Save command exports current presentation of the report to XLS file :

	A	B	C	D	E	F	G	H
1	Part Name	Stock	Material	Thickness	NestName	Quantity	Drawing	
2	5800-U01-BD-01	PL06	Grade A	6	5800-PL06-037	1	U01_BRIDGEDECK	
3	5800-U01-BD-02	PL06	Grade A	6	5800-PL06-030	1	U01_BRIDGEDECK	
4	5800-U01-BD-03	PL06	Grade A	6	5800-PL06-037	1	U01_BRIDGEDECK	
5	5800-U01-BD-04	PL06	Grade A	6	5800-PL06-042	1	U01_BRIDGEDECK	
6	5800-U01-BD-05	HP 140x 7	Grade A			2	U01_BRIDGEDECK	
7	5800-U01-BD-06	HP 120x 6	Grade A			1	U01_BRIDGEDECK	
8	5800-U01-BD-07	HP 140x 7	Grade A			2	U01_BRIDGEDECK	
9	5800-U01-BD-08	HP 120x 6	Grade A			1	U01_BRIDGEDECK	
10	5800-U01-BD-09	HP 120x 6	Grade A			1	U01_BRIDGEDECK	
11	5800-U01-BD-10	HP 120x 6	Grade A			1	U01_BRIDGEDECK	
12	5800-U01-BD-11	HP 120x 6	Grade A			1	U01_BRIDGEDECK	
13	5800-U01-BD-12	HP 140x 7	Grade A			1	U01_BRIDGEDECK	
14	5800-U01-BD-13	HP 140x 7	Grade A			5	U01_BRIDGEDECK	
15	5800-U01-BD-14	HP 120x 6	Grade A			1	U01_BRIDGEDECK	
16	5800-U01-BD-15	HP 120x 6	Grade A			5	U01_BRIDGEDECK	
17	5800-U01-BD-16	HP 140x 7	Grade A			4	U01_BRIDGEDECK	
18	5800-U01-BD-17	HP 140x 7	Grade A			1	U01_BRIDGEDECK	
19	5800-U01-BD-18	HP 140x 7	Grade A			1	U01_BRIDGEDECK	
20	5800-U01-BD-19	PL08	Grade A	8	5800-PL08-015	1	U01_BRIDGEDECK	
21	5800-U01-BD-20	FB 80x 8	Grade A			1	U01_BRIDGEDECK	
22	5800-U01-BD-21	PL08	Grade A	8	5800-PL08-025	1	U01_BRIDGEDECK	
23	5800-U01-BD-22	FB 80x 8	Grade A			1	U01_BRIDGEDECK	
24	5800-U01-BD-23	PL08	Grade A	8	5800-PL08-010	1	U01_BRIDGEDECK	
25	5800-U01-BD-24	PL08	Grade A	8	5800-PL08-001	1	U01_BRIDGEDECK	
26	5800-U01-BD-25	PL08	Grade A	8	5800-PL08-021	1	U01_BRIDGEDECK	
27	5800-U01-BD-26	FB 80x 8	Grade A			1	U01_BRIDGEDECK	
28	5800-U01-BD-27	PL08	Grade A	8	5800-PL08-018	1	U01_BRIDGEDECK	
29	5800-U01-BD-28	FB 80x 8	Grade A			1	U01_BRIDGEDECK	
30	5800-U01-BD-29	PL07	Grade A	7	5800-PL07-041	1	U01_BD	
31	5800-U01-BD-30	PL07	Grade A	7	5800-PL07-040	1	U01_BD	
32	5800-U01-BD-31	PL07	Grade A	7	5800-PL07-045	1	U01_BD	
33	5800-U01-BD-32	PL07	Grade A	7	5800-PL07-045	1	U01_BD	
34	5800-U01-BD-33	PL07	Grade A	7	5800-PL07-038	1	U01_BD	
35	5800-U01-BD-34	PL07	Grade A	7	5800-PL07-028	1	U01_BD	
36	5800-U01-BD-35	PL07	Grade A	7	5800-PL07-027	1	U01_BD	
37	5800-U01-BD-36	PL10	Grade A	10	5800-PL10-006	1	U01_BD	
38	5800-U01-BD-37	PL20	Grade A	20	5800-PL20-001	1	U01_BD	
39	5800-U01-BD-38	HP 140x 7	Grade A			1	U01_BRIDGEDECK	
40	5800-U01-BD-39	HP 140x 7	Grade A			1	U01_BRIDGEDECK	

Remarks:

Contact Marine Technologies to determine compatibility with various ShipConstructor versions.